

## Directions to Cornell Center for Social Science, Clark Hall Hub

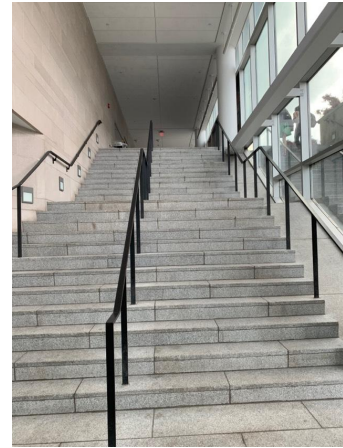
### Physical Sciences Entrance (245 Feeney Way):

To get to Clark Hall, go to 245 Feeney way and follow the sign pointing to the Physical Sciences building.

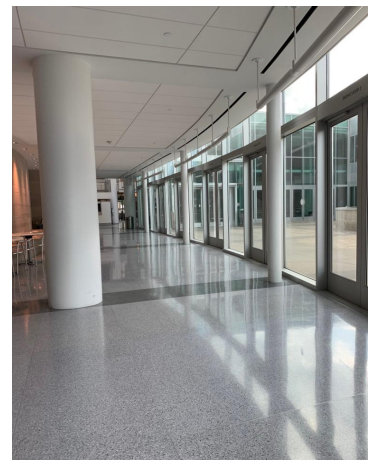
- Go up the stairs and continue straight on the sidewalk .



Enter the building through the glass doors and walk up the set of stairs straight ahead.



Continue walking straight through the hallway.



Once you make it to the Clark atrium, walk up the set of stairs labeled “Clark Hall.”



At the top of the stairs you'll see the Applied & Engineering Physics office on the corner.



Take a left and proceed down the hallway above the atrium.



As you continue down the hallway above the atrium you will pass a navigation sign that directs you to the Clark Library.



Turn right to enter the library in room 290.



Once you've entered the library, turn right to enter the hallway next to room 291, which is our Center's large conference room.



Continue down the hallway until you reach the table and set of chairs.



Turn left by the table and chairs, and continue down the hall where the bathrooms are on the left, and another small meeting room, and two offices are on the right.



Once you've reached the end of the hallway, enter the last door on the left which is room 286, the Director's suite.

